



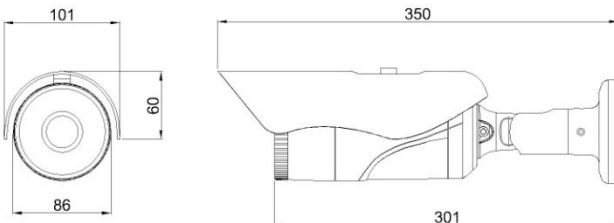
**VISIBLE & LWIR THERMAL FUSION CAMERA /  
 VISIBLE & THRESHOLD FUSION &  $\alpha$ -BLANDING  
 MODE / ONVIF / WIDE FOV / TDN / IRLED / POE  
 THERMAL FUSION NETWORK CAMERA**

## HT-924SE

### FEATURES

- Visible Sensor : 1/2.8" 2.13M Progressive Scan CMOS
- LWIR Sensor : 80x80 Pixels, LWIR (8~14um)
- Thermal Network Camera with Visible Sensor
- Supports Visible Mode & Threshold Fusion Mode &  $\alpha$ -Blanding Mode
- FOV – Horizontal 90°
- Temperature Range 0 °C to 120 °C
- Noise Equivalent Temperature Difference (NETD) : Detector NETD < 100mK
- Conformant with ONVIF Profile-s
- True Day & Night
- 4 PCS High Power IRLED
- IP67 Weatherproof
- PoE (802.3af)

### DIMENSION



### SPECIFICATIONS

	HT-924SE
Signal Format	NTSC/PAL (Selectable)
Visible Image Sensor	1/2.8" 2.13M Progressive Scan CMOS
Visible Total Pixels	1945(H) x 1109(V) = 2,157,005 (Pixels)
Visible Effective Pixels	1945(H) x 1097(V) = 2,133,665 (Pixels)
Visible Sensor Pixel Size	2.9um x 2.9um
Visible Minimum illumination (F1.2)	Color : 0.5 B/W : 0.1 Lux
Visible Iris Control	MANUAL
LWIR Total Pixels	80(H) x 80(V) = 6,400 (Pixels)
LWIR Sensor Pixel Size	34um x 34um
LWIR Spectral Range	LWIR, Wavelength (8 ~ 14um)
Video Output Mode	Main Stream : H.264 Sub Stream : H.264 / MJPEG
Video Resolution	Main stream 30fps : 1920x1080, 1280x720 Sub stream 30fps : 640 x480
Bit Rate Control	CBR / VBR
Ethernet	RJ45 10M/100M self -adaptive Ethernet port
Network Protocol	TFP/IP, UDP, ICMP, HTTP, HTTPS, FTP, DHCP, DNC, DDNS, RTP, RTSP, RTCP, NTP, UPnP, SMTP, SNMP, IGMP, 802.1X, QoS, IPv6
Standard	ONVIF (PROFILE S), Dual Stream
Day & Night	AUTO
Mode	Visible Mode & Threshold Fusion Mode & Iron $\alpha$ -Blanding Mode & Rainbow $\alpha$ -Blanding Mode
FOV-Horizontal	90°
Temperature Range	0 °C ~ 120 °C
Thermal Sensitivity (NETD)	Detector NETD<100mK
Lens Mount Type	Board-in
IRLED	4 PCS High Power IRELD
Power Supply	DC 12V ( $\pm$ 10%), PoE (802.3af)
Power Consumption	LED Off : Max. 3.5W / LED On : Max. 12.0W
Operating Temperature	-10°C ~ +50°C
Operating Humidity	Less than 90%
Dimension	101(Ø) x 350(H)mm
Weight	Approx. 1.45kg (W/ Sunshield & Bracket)

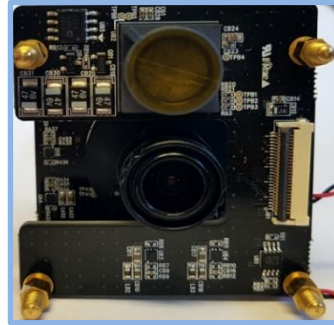
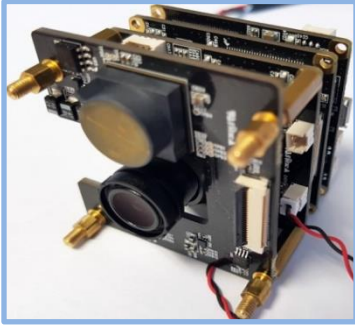
\* In accordance with customers' request, the specifications can be fixed or changed without notice.





### HT-924SE IMAGE

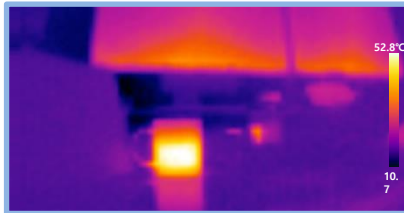
#### CAMERA MODULE



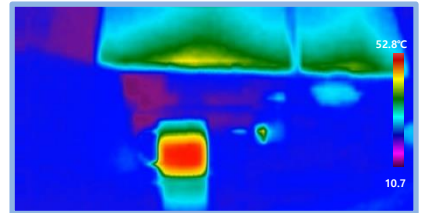
#### LWIR IMAGE



LWIR mono Image



LWIR Iron Image



LWIR Rainbow Image

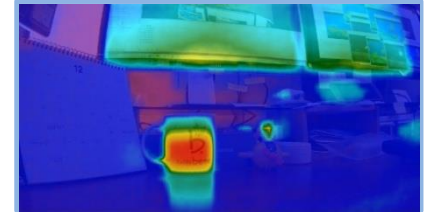
#### LWIR FUSION IMAGE



CMOS Image



Iron α-Blanding



Rainbow α-Blanding



CMOS Image

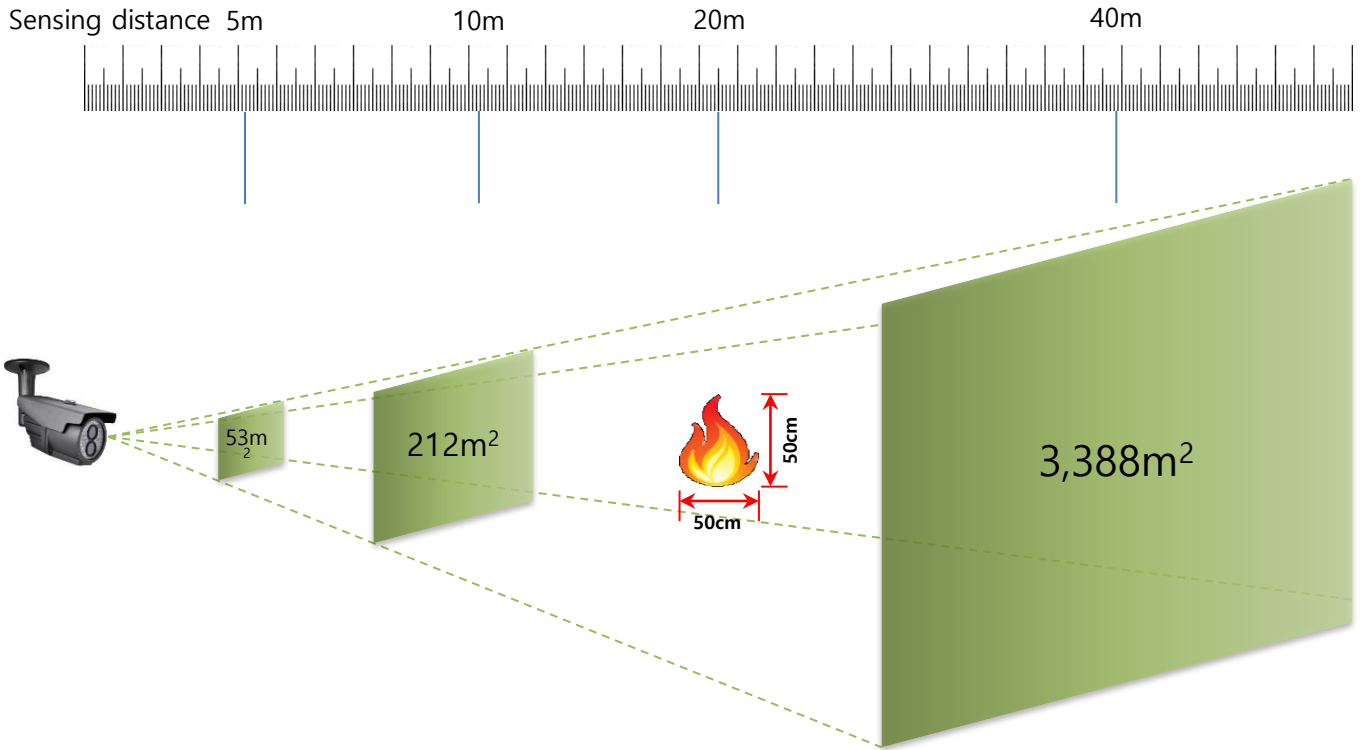


Threshold mode fusion





## HT-924SE SENSING DISTANCE



Measuring distance	5m	10m	15m	20m	25m	30m	35m	40m
Monitored area (m <sup>2</sup> )	53	212	476	847	1,324	1,906	2,594	3,388
Recognize size per pixel (cm)	13	25	38	50	63	75	88	100

